



Phonak Wireless Communication Portfolio

Solutions for adults, teens and education

A Sonova brand

PHONAK
life is on

Wireless Communication Portfolio

Contents

Wireless accessories solutions for adults and teens*

• Solutions for adults and teens	3
• Phone solutions	4
• TV, music and phone solutions	5
• Extended streamer solutions	6
• Remote control solutions	7
• Solutions for understanding in noise and over distance	8

Roger solutions for education*

• Roger microphones	11
• Roger Receivers – for every listener	12
• Roger Dynamic SoundField	14
• Roger Accessories	15

* All devices are compatible with all Phonak hearing aids and most other hearing aid brands. For more information: www.phonakpro.com/fm_configurator

Overview of the wireless accessories for adults, teens and education

Phone calls	TV & music	Remote control	Conversation/Meeting
<p>DECT II EasyCall II</p>	<p>ComPilot Air II ComPilot II TVLink II</p>	<p>RemoteControl App PilotOne II</p>	<p>RemoteMic Roger Clip-On Mic Roger Select Roger Pen Roger EasyPen</p>
Teacher	Students	Classroom	
<p>Roger Touchscreen Mic</p>	<p>Roger Pass-around Roger MyLink Roger Receivers Roger Focus</p>	<p>Roger SoundField System Roger Multimedia Hub Roger DigiMaster X Roger Charging Rack</p>	

Solutions for adults and teens

	Roger Pen or Roger EasyPen + 2 design integrated receivers or Roger X	Roger EasyPen + Roger X + ComPilot II	Roger Clip-on Mic + 2 design integrated receivers or Roger X	Roger Clip-on Mic + Roger X + ComPilot II	ComPilot Air II or ComPilot II	RemoteMic + ComPilot Air II ⁴ or ComPilot II	TVLink II + ComPilot II ⁵ or ComPilot Air II
Transmitter							
Receiver/Streamer							
Conversation in loud noise	●	●	●	●			
Single speaker over distance	●	●	●	●		●	
Interview style or listening to several speakers (conference)	●	●					
TV/HiFi (audio output devices)	●	●	●	●			●
PC/laptop/portable music player	●	●	●	●	●	●	●
Cell phone ¹	● ¹	●		●	●	●	●
IP telephony ^{1,2} , desk phone ³	● ¹	●		●	●	●	●



- ¹ Not applicable for Roger EasyPen
- ² BTD500 USB audio adapter 076-0856 recommended when having Bluetooth connection problems
- ³ MDA200 phone adapter set 076-0031 required
- ⁴ Available as Conversation Set ComPilot Air II + RemoteMic
- ⁵ Available as TV/music Set: ComPilot II + TVLink II

For more phone options please see "Phone calls made easy with Roger", ref. no. 028-1425-02

Compatibility overview wireless accessories

Hearing aid generation

Phonak Venture and Belong compatible

	PilotOne II	ComPilot II	ComPilot Air II	DECT II	EasyCall II ¹
TVLink II		●	●		
RemoteMic		●	●		
RemoteControl App²		●	●		

¹ A choice of phone hard cases for EasyCall II can be found on <http://www.phonak.com/easycall>.

² The RemoteControl App runs on Apple iOS7 or Android 4.0 and higher.

Phone solutions

Phonak DECT II – The home and small office phone solution



The **Phonak DECT II** phone is a landline solution for people with hearing aids, and can also be used by persons without hearing loss. When the DECT II phone is held close to the hearing aids, it sends the phone conversation to both hearing aids simultaneously. This increases speech understanding over the phone, while decreasing bothersome background noise.

Feature overview

- Easy to use: just plug into existing landline socket
- 1 click volume boost: increase the volume of the conversation heard (up to +15 dB)
- A direct dial button to a preferred number
- Demonstration ability: the sound quality of the Phonak DECT II phone can be demonstrated to hearing aid wearers with the push of one button

Compatibility

- Venture and Belong wireless hearing aids

How to use



Phonak EasyCall II – The cell phone solution



The **Phonak EasyCall II** is a small device that attaches directly to a cell phone. It sends the conversation from the cell phone to both hearing aids using Bluetooth technology. This increases speech understanding, while decreasing bothersome background noise.

Feature overview

- Unpack and use: no complicated fitting procedures
- Attaches directly to your cell phone: never to be lost or forgotten
- Battery powered with charger
- 10 hour talk time before charging is necessary
- Stand-by time when not in use > 1 week

Compatibility

- Venture and Belong wireless hearing aids and any Bluetooth enabled cell phone – even non-smartphones

How to use



TV, music and phone solutions

Phonak ComPilot Air II – The clip-on audio streamer



The small and stylish Bluetooth streamer **Phonak ComPilot Air II** is used to send sound from any Bluetooth enabled cell phone or music device wirelessly to both the wearer's hearing aids. It can be used as a "hands-free" device for cell phone conversations or for listening to music directly through the hearing aids.

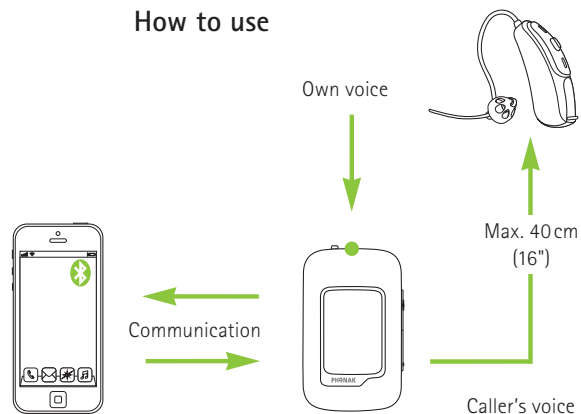
Feature overview

- No neckloop – attaches directly to clothing via a small clip
- Streaming of audio signals in stereo to both hearing aids simultaneously
- Remote control function allows easy program and volume changes
- Battery powered with charger
- Built-in demonstration ability: the sound quality of the ComPilot Air II can be demonstrated to hearing aid wearers with the push of one button

Compatibility

- Venture and Belong wireless hearing aids
- Phonak RemoteControl App: refer to page 7
- Phonak TVLink II: refer to page 6

How to use



Phonak ComPilot II – The multi-purpose audio streamer



Phonak ComPilot II is a multi-purpose streamer that connects wirelessly to all Phonak wireless hearing aids and supports audio inputs via 3.5 mm jack and the europlug socket. Connecting the Roger X receiver to the ComPilot II allows streaming from Roger microphones. It provides high quality sound when watching TV or listening to music for a longer time period.

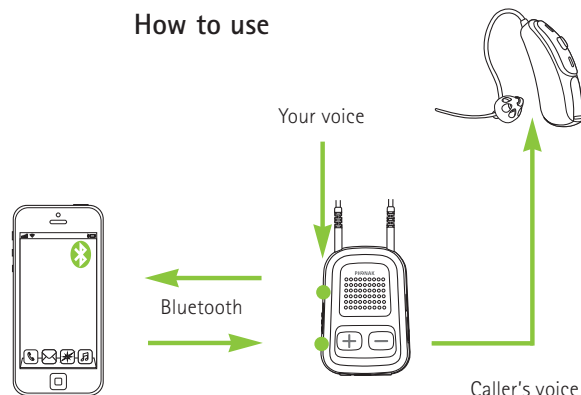
Feature overview

- Streaming audio signals in stereo to both hearing aids simultaneously
- 24 hours continuous streaming time before charging is necessary
- Built-in remote control for hearing aids allows easy program and volume changes
- Exchangeable neckloop available in two colors and lengths
- Battery powered with charger
- Built-in demonstration: the sound quality can be demonstrated to hearing aid wearers with the push of one button

Compatibility

- Venture and Belong hearing aids, Phonak RemoteControl App (refer to page 7), Phonak TVLink II (refer to page 6)

How to use



Extended streamer solutions

Phonak TVLink II – The ideal TV and music interface



The **Phonak TVLink II** connects to any TV or audio source that supports digital audio signals. The TVLink II is used with Phonak ComPilot II or ComPilot Air II and turns any Phonak wireless hearing aids into a headset with a range of up to 30 meters (100 ft).

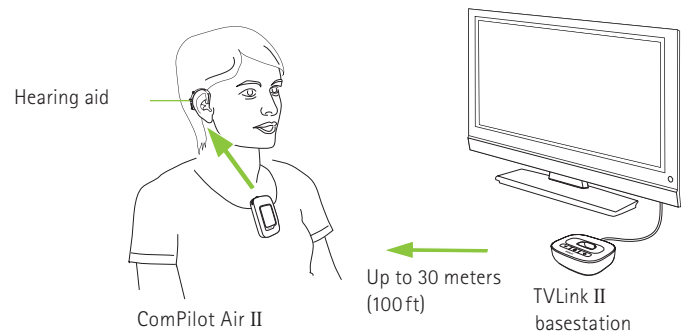
Feature overview

- Supports analog and digital outputs
- Quick and easy installation
- Test mode for a quick audio check
- Complete set including power plug and cables
- Charging slot for ComPilot II and ComPilot Air II

Compatibility

- All Phonak wireless hearing aids streamed with: Phonak ComPilot Air II and Phonak ComPilot II

How to use



Phonak RemoteMic – The lightweight wireless microphone



Phonak RemoteMic is a small microphone that is clipped onto the clothes of the conversation partner of the hearing aid wearer. The conversation partner then speaks into the RemoteMic, and the sound is transmitted over a distance of up to 20 meters (66ft), directly to the hearing aid wearer's hearing aids via Bluetooth.

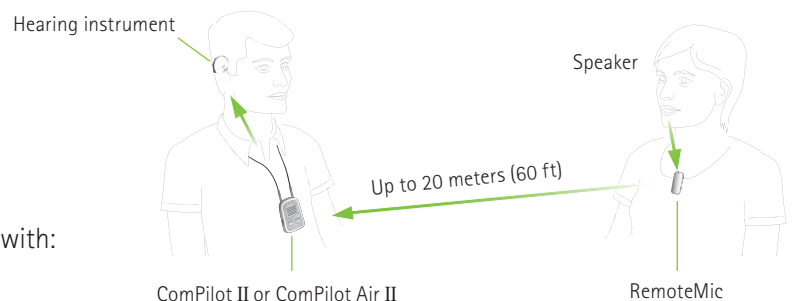
Feature overview

- Lightweight and small
- Omnidirectional microphone
- Battery powered and rechargeable
- Up to 8 hours usage before charging is necessary

Compatibility

- Wireless Venture and Belong hearing aids, together with: Phonak ComPilot Air II or Phonak ComPilot II

How to use



Remote control solutions

Phonak RemoteControl App – The smart remote control



The **Phonak RemoteControl App** is an app that can be downloaded on both Android and iOS phones. It works as an advanced remote control for Phonak Venture and Belong hearing aids.

Feature overview

- Individual left and right volume control
- Selection of hearing aid programs
- Choosing the direction you want to listen to (speech in 360°)
- Configuration of ComPilot Air II and ComPilot II settings
- Connectivity check to hearing aids

Compatibility

- Venture and Belong hearing aids, together with:
Phonak ComPilot Air II or Phonak ComPilot II

How to use

For more information, and to download the remote control app, visit the website*: www.phonakpro.com/rc-app



* Availability of the Phonak RemoteControl App is subject to your country's local app store.

Phonak PilotOne II – The discreet remote control



The **Phonak PilotOne II** is a small remote control that allows easy volume and program changes to the wearer's hearing aids.

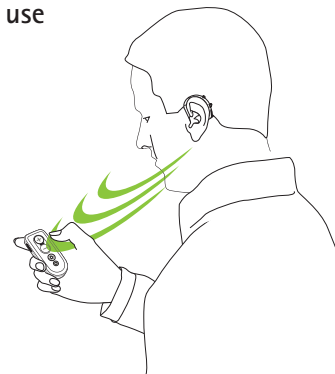
Feature overview

- Easy volume and program selection
- Home button switches to pre-selected program
- Key lock function – to ensure no volume/program changes

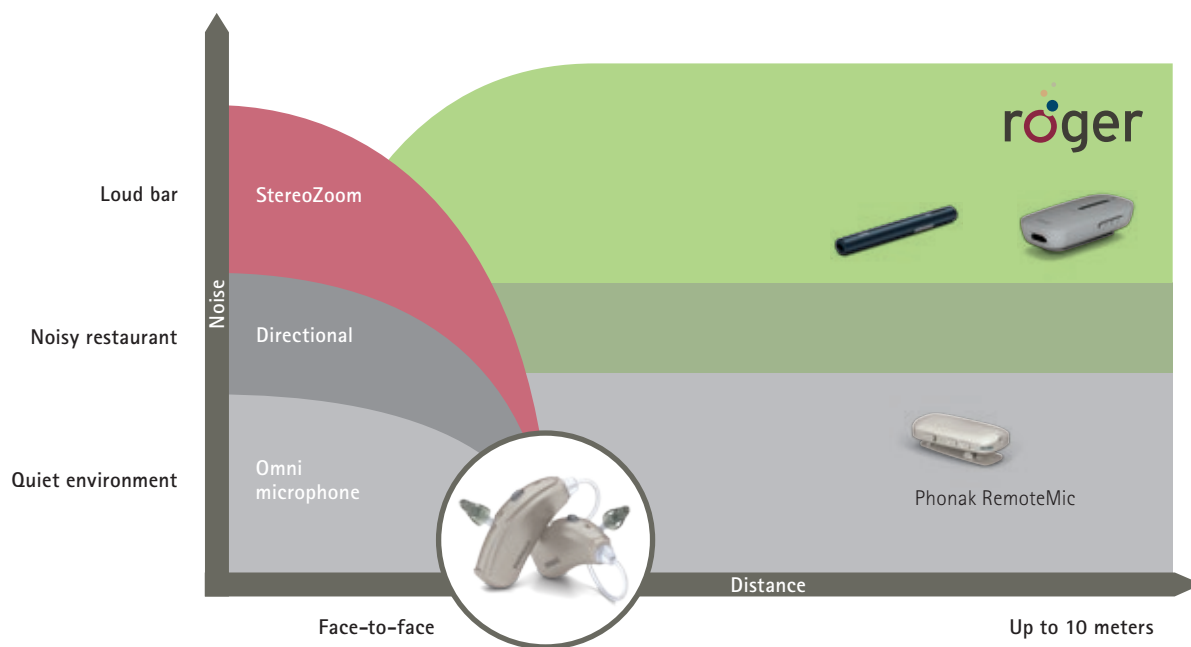
Compatibility

- Venture and Belong wireless hearing aids

How to use



Solutions for understanding in noise and over distance



Roger Pen – The all-inclusive wireless accessory



On the cutting edge of technology, the **Roger Pen** is the ultimate accessory for understanding over a distance, as well as in background noise. The Roger Pen is fully automatic and chooses its own microphone setting to best suit the noisy environment it finds itself in – therefore, delivering uncompromised intelligibility of speech in background noise. It can be put on a table, held in the hand or worn around the speakers neck.

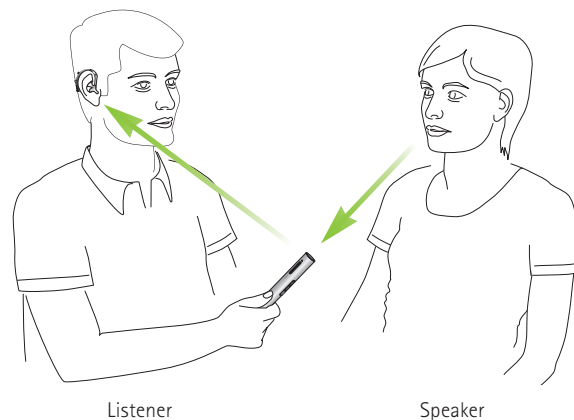
Feature overview

- Proven Roger performance in noise and over distance
- Fully automated microphone settings
- Manual microphone mode option available
- Audio input for connection to multimedia devices
- Wideband audio Bluetooth (HD voice)
- Use as standalone or with other Roger microphones
- Operating time: 7 hours (5 hours with active Bluetooth call)
- Operating range: 10 meters / 33 feet (typical)
20 meters / 66 feet (ideal conditions)

Compatibility

- Compatible with virtually every brand of hearing aid, Cochlear Implant and Bone Anchored Hearing Aid

How to use



Roger Clip-On Mic – The most powerful wireless partner microphone



The **Roger Clip-On Mic** is a small microphone that is clipped onto the clothes of the conversation partner of the hearing aid wearer. The conversation partner then speaks into the Roger Clip-On Mic and the sound is transmitted over distance, directly to the hearing aid wearer's hearing aids. It uses Roger technology to transmit and therefore offers unparalleled sound quality and speech intelligibility in background noise.

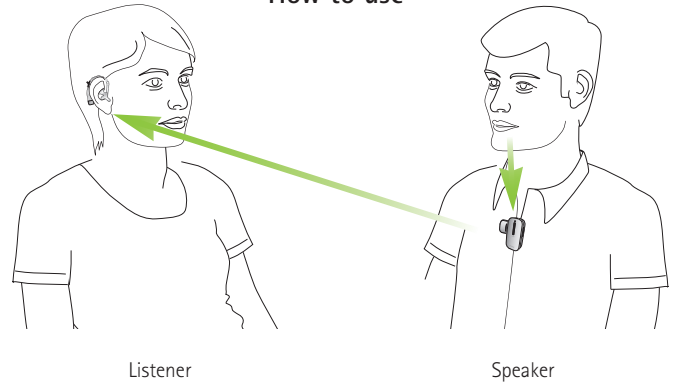
Feature overview

- Proven Roger performance in noise and over distance
- One-click connection – no programming needed
- Audio input for connection to multimedia devices
- Use as standalone or with other Roger microphones
- Operating time: 6 hours
- Operating range: 10 meters / 33 feet (typical)
20 meters / 66 feet (ideal conditions)

Compatibility

- Compatible with virtually every brand of hearing aid, Cochlear Implant and Bone Anchored Hearing Aid

How to use



Roger Select – Engage in the moments that matters the most



The new MultiBeam technology enables you to experience exceptional speech understanding in group conversations. By utilizing multiple microphones in six directions, speech from a 360° radius is calculated and compared. When a microphone with MultiBeam technology is placed on a table it automatically selects the talker. This will help people with hearing loss to hear even better in noisy situations such as restaurants and family gatherings.

Feature overview

- Versatile microphone for everyday use
- MultiBeam Technology
- Proven Roger speech-in-noise performance
- Table mode, selection mode and lapel mode
- Audio input for connection to multimedia devices
- Bluetooth® for phone calls
- Multiple microphone use in a network (MultiTalker Network)

Compatibility

- Compatible with virtually every brand of hearing aid, Cochlear Implant and Bone Anchored Hearing Aid

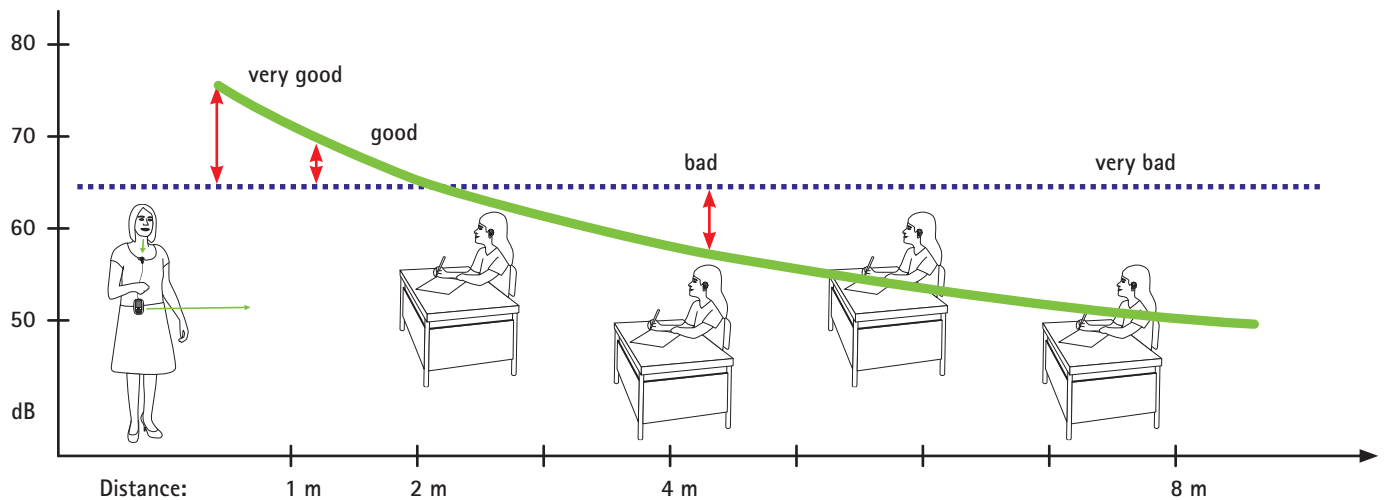
How to use



Roger solutions for education



Understanding the teacher in classroom



	Teacher	Students				Classroom			
Situation	Roger Touchscreen Mic	Roger Pass-around	Roger Receivers	Roger Focus	Roger MyLink	Roger Multimedia Hub	Roger Dynamic SoundField	Roger DigiMaster X	Roger WallPilot
Classroom	●	●	●	●	●	●	●	●	●
Multiple speakers in a classroom	●	●	●	●	●		●	●	
Teacher-student / student-student conversation	●	●	●	●	●	●	●	●	
Audio signal (computer, tablet, whiteboard, TV, radio etc.)	●		●	●	●	●	●	●	
Automatic network connection									●
Other soundfields								●	

Roger microphones

Roger Touchscreen Mic – The wireless teacher microphone



Roger Touchscreen Mic is a simple and intuitive microphone that allows both teachers and students to actively participate in the modern classroom with ease. Roger Touchscreen Mic automatically switches from an individual talker to a small group interaction mode, depending on its placement. It can be worn around the neck or placed on a table to pick up speech from a group of students.

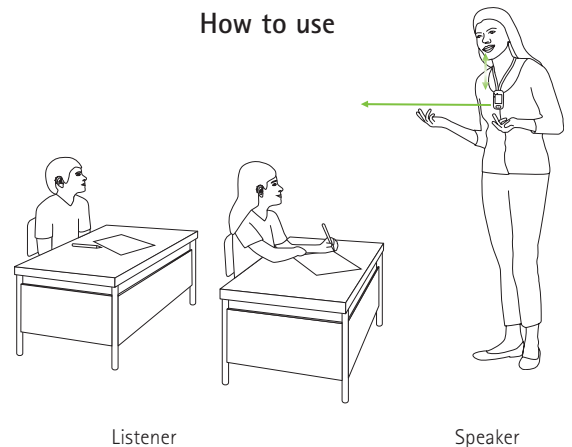
Feature overview

- Touchscreen
- Easy swipe technology
- Allows multiple receivers and microphones to be connected in a network
- Automatic microphones with Lanyard mode, Small group mode and Pointing mode
- Indicator lights

Compatibility

- Compatible with virtually every brand of hearing aid, Cochlear Implant and Bone Anchored Hearing Aid

How to use



Roger Pass-around – Designed to enhance classroom discussions



The **Roger Pass-around** is designed to enhance classroom discussions so that not only teachers, but all students are heard clearly. With an appealing design it is the optimal size for kids and teens to hold and fully control.

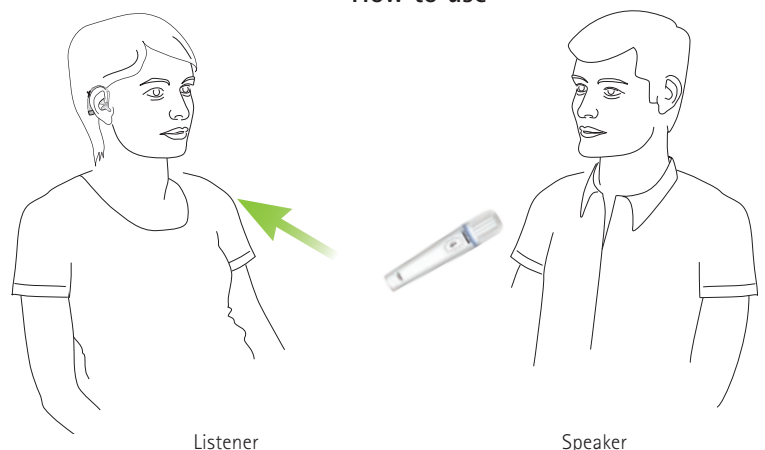
Feature overview

- Light-weight and small
- Automatically activated by voice or Push-to-Talk functionality
- Volume controls and automatic sensitivity
- Intuitive indicator lights
- Roll prevention
- Easy to use

Compatibility

- Compatible with virtually every brand of hearing aid, Cochlear Implant and Bone Anchored Hearing Aid

How to use



Roger Receivers – for every listener

Roger Design-Integrated Receivers for Phonak hearing aids



Phonak Roger Design-Integrated Receivers are ear level receivers specifically designed to fit on Phonak hearing aids. The battery door of the hearing aid is removed and replaced with the design-integrated receiver, making this the most cosmetically appealing receiver option.

Feature overview

- Proven Roger performance in noise and over distance
- Discreetly fits securely on a Phonak hearing aid
- Water resistant
- Tamperproof options available for young children
- Colors available that matches the color of the hearing aid

Compatibility

- All Roger wireless microphones
- With Phonak hearing aids

Roger X – Miniature Universal Receivers



The **Roger X** is a miniature universal receiver. Universal receivers are specifically designed to fit all brands of hearing aids, cochlear implants and Bone Anchored Hearing Aids. Additionally, the Roger X can also plug in at the bottom of the ComPilot II, eliminating the need for ear level receivers (refer to page 5).

Feature overview

- Proven Roger performance in noise and over distance
- Small and cosmetically appealing

Compatibility

- All brands of hearing aids and CI's
- All Roger wireless microphones

Roger Design-Integrated Receivers (for cochlear implants)



Phonak developed **Roger Designed-Integrated Receivers** that attach directly to specific cochlear implant processors.

Feature overview

- Proven Roger performance in noise and over distance
- Cosmetically appealing

Compatibility

- Naída CI Q70, Nucleus 5, 6, 7 and Med El Sonnet
- All Roger wireless microphones

Roger MyLink – The universal inductive neckloop receiver



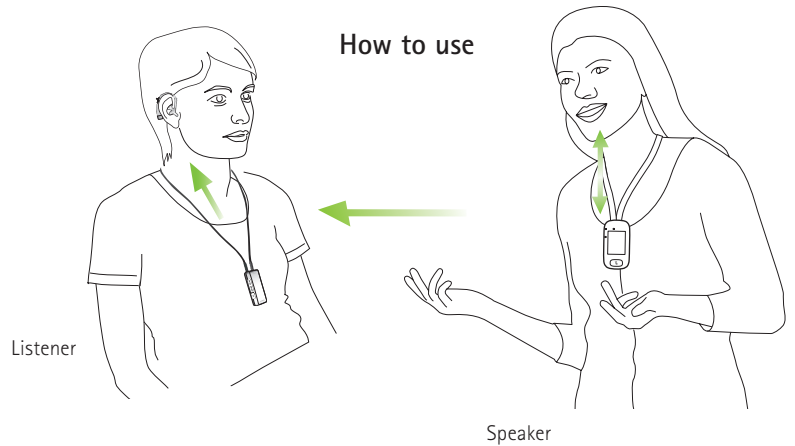
Roger MyLink is an easy-to-use and affordable body worn universal Roger receiver suitable for use with any brand of hearing aid, cochlear implant or Bone Conduction Hearing Aid with a telecoil.

Feature overview

- Roger speech-in-noise performance
- Headphone output

Compatibility

- With all hearing aids with a telecoil
- With most Roger wireless microphones



Roger Focus – For normal hearing students with UHL, APD and ASD*



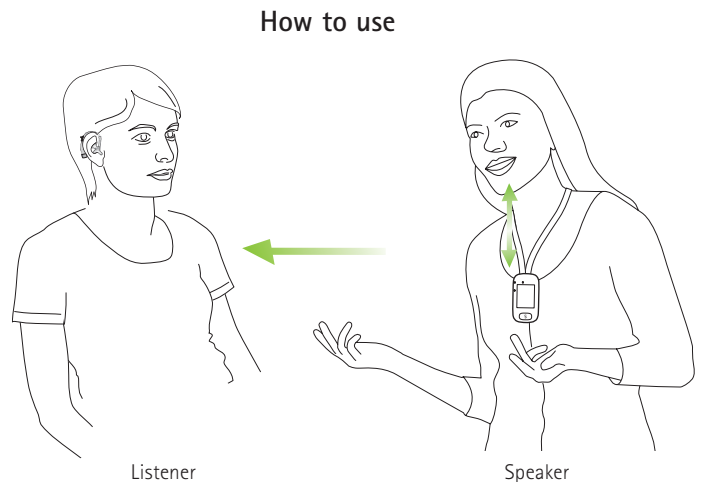
Roger Focus is a fit-and-go product that sends the teachers voice directly into the child's ear, while eliminating background noise. The Roger Focus is especially designed for students that do not wear hearing aids, but can still benefit from superior sound quality in noise and over distance.

Feature overview

- Cuts out distracting noise
- Highly discreet and extremely light
- One-click microphone connection
- Water, sweat and dust resistant

Compatibility

- All Roger wireless microphones



* UHL: unilateral hearing loss; APD: auditory processing disorder;
ASD: autism spectrum disorder

Roger Dynamic SoundField

Roger Dynamic SoundField – Classroom amplification



For the best possible learning experience, children must be able to hear the teacher's voice clearly in class, no matter where they sit. **Roger DigiMaster** systems combine simple operations with exceptional performance. It will automatically adjust to the level of the person speaking and compensate for the room acoustics and the ambient noise level.

Roger DigiMaster 5000

- For regular-sized classroom
- Room size 100m² (1076 ft²) and more
- One portable DigiMaster loudspeaker
- Wearable inspiro speaker transmitter

Roger DigiMaster 7000

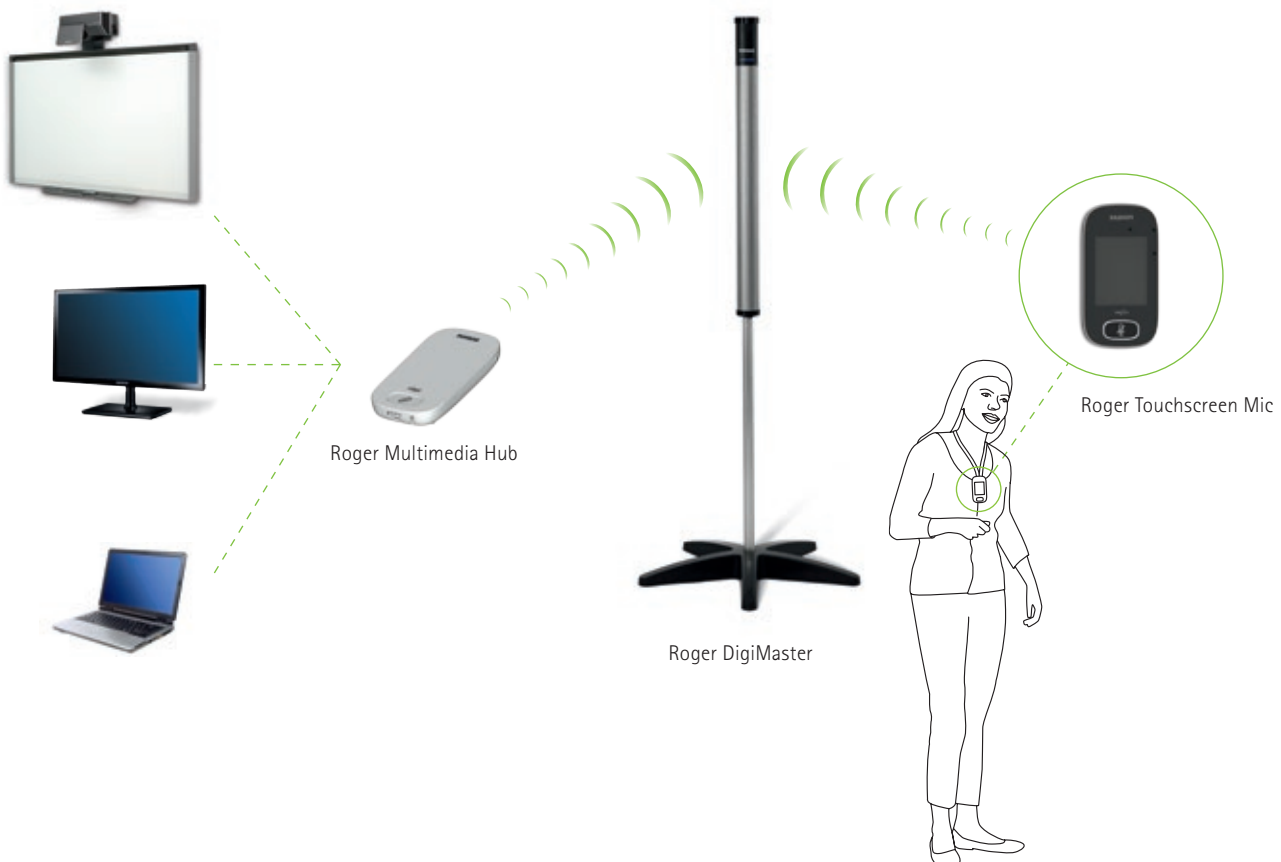
- For larger classrooms, lecture halls and auditoriums
- Room size 300m² (3230 ft²) and more
- Two portable DigiMaster loudspeakers

Feature overview

- Direct audio input socket
- Can use unlimited amount of systems in one location without interference
- No frequency allocation is necessary
- Simple and easy installation

Compatibility

- FM and Roger technology
- Roger Touchscreen Mic or Roger inspiro



Roger Accessories

Roger Multimedia Hub



The **Roger Multimedia Hub** can be connected to any multimedia device used in the classroom ranging from smartboards and TV's to computers and videos. Roger Multimedia Hub can also be connected as a standalone media transmitter by an individual student for listening to an audiobook, a tablet or a lesson on a computer.

Feature overview

- Can be used as multimedia hub, classroom network or for individual use
- Mixing audio and voice simultaneously
- Ideal for independent listening activities
- Two indicator lights
- Easy to use

Compatibility

- Compatible with virtually every brand of hearing aid, Cochlear Implant and Bone Anchored Hearing Aid

Roger DigiMaster X – The intelligent upgrade for room amplification systems



DigiMaster X is a simple and cost-effective to upgrade any existing amplification system to unparalleled Roger sound quality.

Feature overview

- The ultimate in speech clarity
- Audio recording
- Additional wireless microphones can be added for multiple speakers
- Easy installation

Compatibility

- FM systems

Roger WallPilot



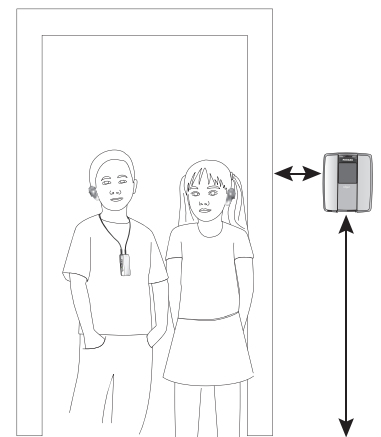
The **Roger WallPilot** is a wall-mounted device which is placed next to the door of a classroom, lecture hall or auditorium. The WallPilot automatically synchronises the student's Roger receivers to the room's Roger network as they pass the Roger WallPilot. Teachers can also connect their Roger microphones to the room's network by switching their Roger microphones on in close proximity to the Roger WallPilot.

Feature overview

- Adjustable operating range
- Wall-mounted or placed on a table

Compatibility

- Roger Touchscreen Mic, Roger inspiro, Roger Pass-around and Roger Multimedia Hub
- All Roger receivers



Life is on

We are sensitive to the needs of everyone who depends on our knowledge, ideas and care. And by creatively challenging the limits of technology, we develop innovations that help people hear, understand and experience more of life's rich soundscapes.

**Interact freely. Communicate with confidence.
Live without limit. Life is on.**

www.phonakpro.com